

The Blue Line

The Foust Marketing, Inc. Newsletter

Inside this issue:

Jesco—New Generation MEMDOS SMART Pumps	1
Griffco—High-Flow Back Pressure Valves	1
Champion Strut™—The Advantages of Fiberglass Strut System	1
Non-Metallic Gear Pumps TEF-MAG®	2
The Blue Line—Win \$50 Amazon Gift Card!	2

Jesco—New Generation MEMDOS SMART Pumps



The MEMDOS SMART Series stepper motor-driven diaphragm dosing pump from Lutz Jesco, is suitable for highly accurate, demanding dosing tasks and applications.

Its innovative drive enables the pump to process even the

smallest volumes with an extremely high degree of accuracy. Asynchronous running with variable speeds of suction stroke and pressure stroke allow for homogeneous and pulse-reduced dosing.

Due to enhanced Slow Mode options, even highly-viscous media can be transferred at great levels of reliability and reproducibility.

Available in eight sizes and four models, the MEMDOS SMART pumps provide a wide range of

expanded functionalities.

Capacity ranges cover flows from 0.68 gph at 300 psi, to 48 gph at 60 psi.

Depending on the application, various materials are available. A broad range of accessories are available to ensure quick installation and optimal dosing results. Jesco dosing pumps and be ordered with complete Jesco pre-engineered or custom skids per customer specification.

Download the specification at [MEMDOS SMART Specification](#).

Industry Events

- IPE (International Poultry Expo)
Atlanta, GA
Jan 30-1, 2024
www.ipexpo.com
- Southwest Pool & Spa Show
San Antonio, TX
Feb 14-17, 2024
www.swpsshow.com

Notes of Interest

- “And he said to his disciples, Therefore I tell you, do not be anxious about your life, what you will eat, nor about your body, what you will put on.”
—Luke 12:22
- “People do not decide their futures, they decide their habits and their habits decide their futures.”
—F.M. Alexander

Company News

- Foust Marketing’s partnership with Thermostat Solenoid Valves has been expanded. We are now the National Representative for key industrial accounts. More information in next issue!

Griffco—High-Flow Back Pressure Valves



Griffco High-Flow diaphragm back pressure valves are designed to enhance the perfor-

mance of chemical feed systems by applying a continuous back pressure to the chemical feed pump. These valves not only exert continuous back pressure on the chemical feed pump but also serve as effective anti-siphon valves. Their larger orifice size makes them exceptionally well-suited for handling fluids with higher viscosity, enhancing their versatility and applicability in various industrial settings.

Griffco Benefits:

- High reliability at affordable price
- Long diaphragm life
- Wide range of valve materials
- Multiple diaphragm material options
- Factory or field settable

For more detailed information, contact our sales team or visit [Griffco Hi-Flow Pressure Valves](#).

Champion Strut™—The Advantages of Fiberglass Strut System

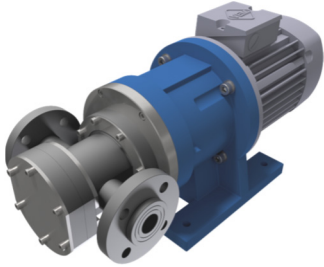


(only) will accommodate stainless steel pipe straps; Easy to field cut and drill; Lightweight for smooth installation. For more information, visit [Champion Strut Advantages](#).

For long-lasting project performance, Champion Strut™ has been successfully used in many highly corrosive applications including wastewater treatment, refineries, chemical plants, marinas, pulp and paper, desalination facilities, water reclamation facilities, theme parks, utilities, aquariums, pools and more.

Champion Strut™ Advantages—Multiple strut channel profiles to accommodate any application; Non-metallic – available in both polyester (dark grey) and vinyl ester (beige) resin systems; Corrosion-resistant fiberglass, fire retardant, and UV resistant; CS-SST Series Channel

Non-Metallic Gear Pumps TEF-MAG®



The MARCH TEF-MAG® series pumps are magnetic drive, external gear, rotary positive displacement pumps, all wetted pump parts made of non-metallic materials also according to ATEX 2014/34/EU designed for operation with highly corrosive chemicals.

Gear pumps generate an almost pulsation-free forced flow according to the positive displacement principle with high differential pressure. The pump housings of the TEF-MAG® series are machined from robust solid material and corrosion-resistant plastics such as PP, PVDF,

PEEK, PVC or PE. Even the wetted shafts are made of non-metallic engineering ceramics such as SSiC or Al2O3 which represents the best possible chemical resistance. The gears are made of high performance plastics which have self-lubricating properties. Thus the pumps of the TEF-MAG® series are also capable of pumping low viscosity liquids without any problems.

Power is transmitted from the drive to the pump by a force-locked connection without contact by means of strong NdFeB permanent magnets. As a result the pump operates without any mechanical shaft seal ensuring safe and leak-free pumping of corrosive, toxic and explosive liquids. Pumps for hazardous areas can be supplied in corrosion-resistant and conductive plastics.

Watch the TEF-MAG® video for explanation and working principle.

Video: [TEF-MAG® Gear Pumps](#)

The Blue Line—Win \$50 Amazon Gift Card!

Happy New Year! To start of the year, we are offering a \$50 Amazon Gift Card courtesy of Lutz Jesco and Foust Marketing.



1. What does the innovative drive in the NEW MEMDOS SMART stepper pump from Jesco enable the pump to process?
2. With the Griffco High-Flow Back Pressure Valves, what does the larger orifice size make them exceptionally well-suited for handling?
3. List a couple advantages of the Champion Strut™ fiberglass strut system?
4. What corrosion resistant plastics is the MARCH TEF-MAG® series pump machined from?
5. What did a F.M. Alexander say about your habits?

Congrats to the winner of the Year-End Prize, the Apple HomePod courtesy of Harrison Machine and Foust Marketing.

Annie Fraundorfer
Harrington—Lenexa, KS



Complete the entry form at www.foustmarketing.com/entry-form.



Main Office

Foust Marketing, Inc.
P.O. Box 7413
The Woodlands, TX 77387-7413
Tel: 281-296-2500
www.foustmarketing.com

