

The Blue Line

The Foust Marketing, Inc. Newsletter

Inside this issue:	
Lutz—PVDF Drum Pump for Acid Applications	1
Meunier Technologies—Now Available in Stainless Steel	1
Champion Strut™ Rigid Pipe Clamps	1
Pyxis—CR-300 Wired Corrosion Rate Sensor	2
The Blue Line—Win Dairy Queen Gift Card!	2

Lutz—PVDF Drum Pump for Acid Applications



Lutz has the drum pump suited to any liquid to be pumped without compromise. Acids and alkalis have no impact on polypropylene and PVDF drum

pumps. Aluminum pumps ensure unrestricted flow of diesel and oil. Stainless steel is particularly suitable for corrosive and neutral liquids, it proves especially useful in the pharmaceutical and food industry. Hastelloy C, which is extremely resistant, does not stop at highly aggressive acids or alkalis. You have the choice, regardless for which application.

Lutz PVDF drum pumps are the perfect solution for transferring critical fluids and acids. If you need to transfer acids from a

drum or container, then Lutz PVDF drum pumps are ideal for easy transfer of the acids.

The Lutz PVDF drum pump is suitable for corrosive, aqueous to slightly viscous fluids. Perfectly suited for withdrawing or transferring concentrated acids and alkalis like chloric acid, chromic acid, sulfuric acid, nitric acid, hydrofluoric acid and sodium hypochlorite.

For more technical data on tube length and motor selection, visit [Lutz PVDF Drum Pump](#).

Industry Events

- NACE Corrosion (National Association of Corrosion Engineers)
San Antonio, TX
Mar 6-10, 2022
www.nacecorrosion.org
- Texas Water (Water Environment Association of Texas)
San Antonio, TX
Apr 4-7, 2022
www.texas-water.com

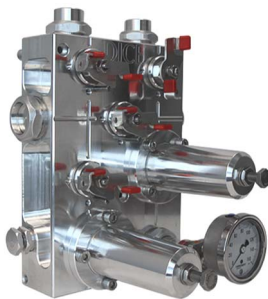
Notes of Interest

- "Walk with the wise and become wise, for a companion of fools suffers harm."
—Proverbs 13:20
- "Isn't it funny how day by day nothing changes, but when you look back, everything is different."
—C.S. Lewis

Company News

- Foust Marketing offers services for installation training, project specifications, and pipe tools. Contact our team for details.

Meunier Technologies—Now Available in Stainless Steel



The DICE™ dosing module is now available in 316L Stainless Steel. The DICE integrates all

the necessary discharge components required for a chemical dosing system. The block type design is a rigid, compact reliable product. The significantly reduced number of connections is a major benefit greatly decreasing the leakage potential.

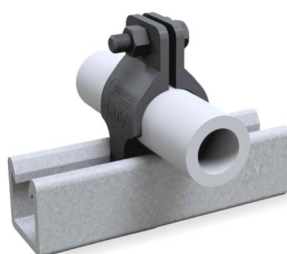
Key Features

- Compact design resulting in minimal footprint.
- Integrate the module to any chemical dosing pump

- Capable of having only 1 dosing module for 3 pumps. (1 injection point, 3 pumps).
- Made with Stainless Steel 316L for wetted parts
- Groundable
- Operation pressure 0-350 psi
- Pump calibration
- Lockout option available

For more technical data, visit [Dice Dosing Module SS 316L](#).

Champion Strut™ Rigid Pipe Clamps



Champion Strut™ is a fiberglass non-metallic channel framing system that includes a complete line of non-metallic accessories, fasteners, hangers, pipe clamps and channels. Champion Strut is a versatile, high-strength fiberglass framing system that has been successfully used in many highly corrosive applications.

Champion Strut rigid pipe clamps are made from glass-reinforced polyurethane and available in 1/2" - 8" nominal pipe sizes. Champion pipe clamps are IPS-sized to fit the OD (outside diameter) of Schedule 40 and Schedule 80 PVC piping and conduit as well as IPS-sized steel piping and steel/fiberglass conduits. The Champion Strut rigid clamps are designed to be used within (and not to exceed) operating temperatures up to 160°F. Download the [Champion Strut Catalog](#) for details.

Pyxis—CR-300 Wired Corrosion Rate Sensor



The CR-300 corrosion rate sensor is ideal for cooling and process water treatment. The sensor utilizes the linear polarization resistance (LPR) method to produce a raw signal. The raw signal is conditioned, amplified and digitized directly in the sensor itself. Corrosion sensors measure sample water conductivity directly and compensate for the conductivity. These unique product characteristics make the Pyxis Lab® LPR superior in performance and accuracy. In addition to the LPR measurement used to obtain the general corrosion rate, the CR-300 sensor also measure for electrochemical noise. The measured noise data is used to calculate an index to quantify the localized corrosion rate also referred to as pitting.

LPR corrosion rate monitoring is a valuable tool that can be easily and affordably deployed to provide both general and localized corrosion measurements instantly. There is a common industrial misnomer that the use of inline LPR corrosion sensors should be identical to corrosion coupons. The LPR Corrosion level represents the real-time electrochemical measurement of corrosion.

The Blue Line—Win Dairy Queen Gift Card!

Foust Marketing is offering the opportunity to win a prize in this issue of [The Blue Line](#).

This issue we are offering a **Dairy Queen \$25 gift card**. Enjoy a sweet treat courtesy of Foust Marketing and Lutz.

Enter by visiting below link with the answers to the questions.

1. Will acids and alkalis have any impact on the Lutz PVDF drum pump?
2. List a couple features of the Dice Dosing Module now available in stainless steel?
3. What nominal pipe sizes is the Champion Strut pipe clamps available?
4. What applications is the Pyxis CR-300 Wired Corrosion Rate



Sensor ideal for?

5. What did C.S. Lewis say about how times change?

Winner of Wyze Scale from the last issue courtesy of Foust Marketing and SWM.

Katy Gruber
King Plastic—North Port, FL

Complete the entry form at www.foustmarketing.com/entry-form.



foustmarketing, inc.

Engineered solutions for your business

Main Office

Foust Marketing, Inc.
P.O. Box 7413
The Woodlands, TX 77387-7413
Tel: 281-296-2500
Fax: 281-296-2566
www.foustmarketing.com

Pulsafeeder



NIBCO



King



Harrison



IPS



SWM



Lutz



Champion

