

# Geotextiles

## Weed Barrier



## Drain + Filter



## Erosion Control



## Installation Accessories



**Christy's**<sup>®</sup>

View Our 4,000+ Items at [TChristy.com](http://TChristy.com)

# Polyspun & Spunbond Professional Fabrics

Christy's landscape fabrics are constructed of polyester fibers bonded into a swirling pattern. The results are fabrics that are strong and durable yet permeable to air, water and nutrients, while effectively inhibiting the growth of weeds.

## Typical Applications

- Landscape beds, maintenance strips
- Planters and pot liners
- Under mulch of all types: bark, gravel, stone, etc.
- Behind retaining walls
- Soil separation
- Underlayment for paving bricks and decks

## Key Benefits

- Effective weed control without need for chemicals
- Water conservation – fabric lowers soil evaporation rates
- Reduces movement of soil in hardscape areas
- Helps stabilize soil and reduce mulch wash-off

Fabric is available in a variety of nominal weights that are tear-resistant and puncture-resistant, yet easy to cut and install. All naturally resist unravelling and are UV-stable. Material is typically covered with mulch for longest life. Pretreat the soil for weeds prior to installing fabric for the best results.

*Smaller-size rolls are display packaged for showroom sales. Larger rolls are polybagged for easy jobsite storage and handling.*



3 oz Silver 15 year

## BEST 3.0 oz Polyspun (15 Year) Silver

| Width | Roll Length | Total Sq. Ft. | Part No.       | Packaging | Box Qty. |
|-------|-------------|---------------|----------------|-----------|----------|
| 3'    | 50'         | 150           | TC-WBP-3-350   | Display   | 27       |
| 3'    | 100'        | 300           | TC-WBP-3-3100  | Display   | 27       |
| 3'    | 300'        | 900           | TC-WBP-3-3300  | Bulk      | 1        |
| 4'    | 100'        | 400           | TC-WBP-3-4100  | Display   | 27       |
| 4'    | 200'        | 800           | TC-WBP-3-4200  | Bulk      | 1        |
| 4'    | 300'        | 1200          | TC-WBP-3-4300  | Bulk      | 1        |
| 6'    | 300'        | 1800          | TC-WBP-3-6300  | Bulk      | 1        |
| 9'    | 300'        | 2700          | TC-WBP-3-9300  | Bulk      | 1        |
| 12'   | 300'        | 3600          | TC-WBP-3-12300 | Bulk      | 1        |



2.8 oz Black 15 year

## BETTER 2.8 oz. Spunbond (15 Year) Black

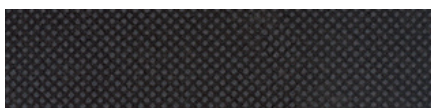
| Width | Roll Length | Total Sq. Ft. | Part No.       | Packaging | Box Qty. |
|-------|-------------|---------------|----------------|-----------|----------|
| 3'    | 50'         | 150           | TC-WBS-28-350  | Display   | 24       |
| 3'    | 100'        | 300           | TC-WBS-28-3100 | Display   | 24       |
| 3'    | 300'        | 900           | TC-WBS-28-3300 | Bulk      | 1        |
| 4'    | 50'         | 200           | TC-WBS-28-450  | Display   | 24       |
| 4'    | 300'        | 1200          | TC-WBS-28-4300 | Bulk      | 1        |
| 6'    | 300'        | 1800          | TC-WBS-28-6300 | Bulk      | 1        |



2.0 oz Black 10 year

## STANDARD 2 oz. Spunbond (10 Year) Black

| Width | Roll Length | Total Sq. Ft. | Part No.         | Packaging | Box Qty. |
|-------|-------------|---------------|------------------|-----------|----------|
| 3'    | 50'         | 150           | TC-WBSB-20-350   | Display   | 38       |
| 3'    | 100'        | 300           | TC-WBSB-20-3100  | Display   | 22       |
| 3'    | 300'        | 900           | TC-WBSB-20-3300  | Bulk      | 1        |
| 4'    | 300'        | 1200          | TC-WBSB-20-4300  | Bulk      | 1        |
| 6'    | 300'        | 1800          | TC-WBSB-20-6300  | Bulk      | 1        |
| 8'    | 300'        | 2400          | TC-WBSB-20-8300  | Bulk      | 1        |
| 12'   | 300'        | 3600          | TC-WBSB-20-12300 | Bulk      | 1        |



1.5 oz Black 8 year

## BASIC 1.5 oz Spunbond (8 Year) Black - Used with annual plantings

| Width | Roll Length | Total Sq. Ft. | Part No.       | Packaging | Box Qty. |
|-------|-------------|---------------|----------------|-----------|----------|
| 3'    | 50'         | 150           | TC-WBS-15-350  | Display   | 36       |
| 3'    | 100'        | 300           | TC-WBS-15-3100 | Display   | 22       |

View Our 4,000+ Items at [TChristy.com](http://TChristy.com)

# Christy's Woven Needlepoint Fabrics

Christy's woven fabrics are used in landscaping and nursery/greenhouse applications. Pin-punched fibers use capillary action to draw water through the fabric while offering exceptional puncture and tear-resistance. They are frequently applied for nursery holding areas and growing operations and where a weed-free environment is a must.

They are naturally thicker, more durable and longer lasting than bonded fabrics, making them ideal for underlayment of crushed rock, pavers, and mulch in pathways and heavy-traffic areas. Pretreat the soil for weeds prior to installing fabric for best results.

## 4.8 oz Woven (LIFETIME) Needlepoint Black



4.8 oz Lifetime

| Width | Roll Length | Total Sq. Ft. | Part No.        | Packaging | Box Qty. |
|-------|-------------|---------------|-----------------|-----------|----------|
| 3'    | 250'        | 750           | TC-WBN-48-3250  | Bulk      | 1        |
| 4'    | 250'        | 1000          | TC-WBN-48-4250  | Bulk      | 1        |
| 6'    | 250'        | 1500          | TC-WBN-48-6250  | Bulk      | 1        |
| 12'   | 250'        | 3000          | TC-WBN-48-12250 | Bulk      | 1        |

## 4.1 oz Woven (20 YEAR) Needlepoint Black



4.1 oz 20 year

| Width | Roll Length | Total Sq. Ft. | Part No.        | Packaging | Box Qty. |
|-------|-------------|---------------|-----------------|-----------|----------|
| 3'    | 50'         | 150           | TC-WBN-41-350   | Bulk      | 1        |
| 3'    | 100'        | 300           | TC-WBN-41-3100  | Bulk      | 1        |
| 4'    | 250'        | 1000          | TC-WBN-41-4250  | Bulk      | 1        |
| 12'   | 250'        | 3000          | TC-WBN-41-12250 | Bulk      | 1        |

# Ground Cover



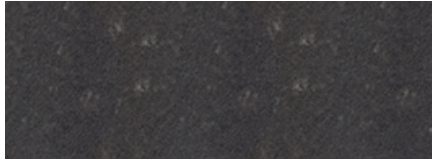
3 oz Black 5 year

## 3 oz Woven (5 YEAR) Black

| Width | Roll Length | Total Sq. Ft. | Part No.      | Packaging | Box Qty. |
|-------|-------------|---------------|---------------|-----------|----------|
| 3'    | 300'        | 900           | TC-GC-3-6300  | Bulk      | 1        |
| 4'    | 250'        | 1200          | TC-GC-3-4300  | Bulk      | 1        |
| 4'    | 250'        | 4500          | TC-GC-3-15300 | Bulk      | 1        |

# Heavy Duty Drain Filter Fabrics

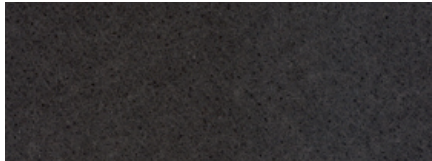
These heavy-duty fabrics are used in drainage, erosion control, soil stabilization, septic fields, soil layer separation and under pathways. Because of their heavy-weight design and long-life performance, they are often specified by government agencies for landscape and roadway projects. See TChristy.com for specification information.



3.1 oz Non-Woven

## 3.1 oz Non-Woven

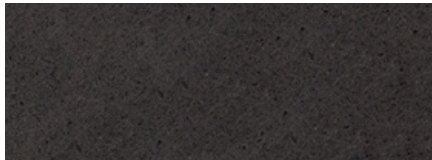
| Width | Roll Length | Total Sq. Ft. | Part No.      | Packaging | Box Qty. |
|-------|-------------|---------------|---------------|-----------|----------|
| 3'    | 50'         | 150           | TC-DF3650-3A  | Bulk      | 1        |
| 3'    | 100'        | 300           | TC-DF36100-3A | Bulk      | 1        |
| 3'    | 360'        | 1080          | TC-DF36360-3A | Bulk      | 1        |
| 4'    | 50'         | 200           | TC-DF4850-3A  | Bulk      | 1        |
| 4'    | 100'        | 400           | TC-DF48100-3A | Bulk      | 1        |
| 4'    | 360'        | 1440          | TC-DF48360-3A | Bulk      | 1        |
| 5'    | 360'        | 1800          | TC-DF60360-3  | Bulk      | 1        |
| 6'    | 360'        | 2160          | TC-DF72360-3  | Bulk      | 1        |
| 7.5'  | 360'        | 2700          | TC-DF90360-3  | Bulk      | 1        |
| 12.5' | 360'        | 4500          | TC-DF150360-3 | Bulk      | 1        |
| 15'   | 360'        | 5400          | TC-DF180360-3 | Bulk      | 1        |



4 oz Non-Woven

## 4 oz Non-Woven

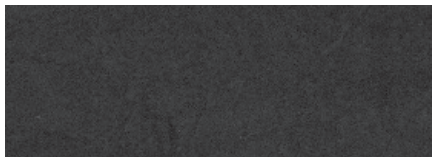
| Width | Roll Length | Total Sq. Ft. | Part No.      | Packaging | Box Qty. |
|-------|-------------|---------------|---------------|-----------|----------|
| 3'    | 50'         | 150           | TC-DF3650-4A  | Bulk      | 1        |
| 3'    | 100'        | 300           | TC-DF36100-4A | Bulk      | 1        |
| 3'    | 360'        | 1080          | TC-DF36360-4A | Bulk      | 1        |
| 4'    | 50'         | 200           | TC-DF4850-4A  | Bulk      | 1        |
| 4'    | 100'        | 400           | TC-DF48100-4A | Bulk      | 1        |
| 4'    | 360'        | 1440          | TC-DF48360-4A | Bulk      | 1        |
| 5'    | 360'        | 1800          | TC-DF60360-4  | Bulk      | 1        |
| 6'    | 360'        | 2160          | TC-DF72360-4  | Bulk      | 1        |
| 7.5'  | 360'        | 2700          | TC-DF90360-4  | Bulk      | 1        |
| 12.5' | 360'        | 4500          | TC-DF150360-4 | Bulk      | 1        |
| 15'   | 360'        | 4500          | TC-DF180360-4 | Bulk      | 1        |



7 oz Non-Woven

## 7 oz Non-Woven

| Width | Roll Length | Total Sq. Ft. | Part No.      | Packaging | Box Qty. |
|-------|-------------|---------------|---------------|-----------|----------|
| 5'    | 300'        | 1500          | TC-DF60300-7  | Bulk      | 1        |
| 6'    | 300'        | 1800          | TC-DF72300-7  | Bulk      | 1        |
| 7.5'  | 300'        | 2250          | TC-DF90300-7  | Bulk      | 1        |
| 12.5' | 300'        | 3750          | TC-DF150300-7 | Bulk      | 1        |
| 15'   | 300'        | 4500          | TC-DF180300-7 | Bulk      | 1        |



8 oz Non-Woven

## 8 oz Non-Woven

| Width | Roll Length | Total Sq. Ft. | Part No.      | Packaging | Box Qty. |
|-------|-------------|---------------|---------------|-----------|----------|
| 15'   | 300'        | 4500          | TC-DF180300-8 | Bulk      | 1        |

View Our 4,000+ Items at [TChristy.com](http://TChristy.com)

# Christy's Drain-EEZ Perforated Pipe Sleeving Sock



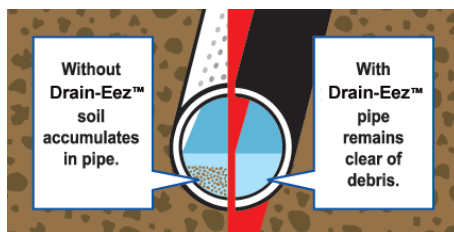
- Slip over perforated drain pipe to protect it from infiltration of silt and native backfill soil
- Keeps out debris to maintain water flow
- Reduces need for granular infill material
- Easy to use and install
- Chemically inert to most soil conditions

## Drain-EEZ 3" Diameter for 3" nominal pipe

| Width | Roll Length | Total Sq. Ft. | Part No.  | Packaging | Box Qty. |
|-------|-------------|---------------|-----------|-----------|----------|
| 3"    | 10'         | 30            | TC-DE310  | Bulk      | 1        |
| 3"    | 100'        | 300           | TC-DE3100 | Bulk      | 1        |

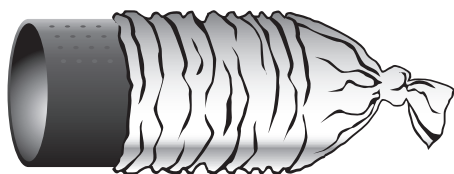
## Drain-EEZ 4" Diameter for 4" nominal pipe

| Width | Roll Length | Total Sq. Ft. | Part No.  | Packaging | Box Qty. |
|-------|-------------|---------------|-----------|-----------|----------|
| 4"    | 10'         | 40            | TC-DE410  | Bulk      | 1        |
| 4"    | 100'        | 400           | TC-DE4100 | Bulk      | 1        |



## Drain-EEZ 6" Diameter for 6" nominal pipe

| Width | Roll Length | Total Sq. Ft. | Part No.  | Packaging | Box Qty. |
|-------|-------------|---------------|-----------|-----------|----------|
| 6"    | 100'        | 600           | TC-DE6100 | Bulk      | 1        |



## Drain-EEZ 8" Diameter for 8" nominal pipe

| Width | Roll Length | Total Sq. Ft. | Part No.   | Packaging | Box Qty. |
|-------|-------------|---------------|------------|-----------|----------|
| 8"    | 100'        | 800           | TC-DE8100A | Bulk      | 1        |

### Works with:

- PVC ASTM-D2729
- PVC SDR35 ASTM D-3034
- PVC Schedule 40 ASTM-D1785
- HDPE Corrugated Drainage Pipe ASTM -F405
- HDPE Smoothwall Drainage Pipe ASTM-F810
- HDPE Dual Wall

# Christy's Gravel Bags

Alternative to traditional sand and gravel bags for dewatering and runoff protection. Fill with your choice of media. UV-resistant, rot resistant. Custom sizes are available for quote. Use with Christy's Black UV stable Zip Ties for best results.



## Christy's Gravel Bags

| Width x Length |     | Fabric Weight | Part No.                 | Packaging |
|----------------|-----|---------------|--------------------------|-----------|
| 16"            | 24" | 4 oz          | TC-GB1624-4A             | 1         |
| 8"             | 48" | 7 oz          | TC-GB0848-7A-CL (Closed) | 1         |
| 8"             | 48" | 7 oz          | TC-GB0848-7A-OP (Open)   | 1         |
| 12"            | 48" | 7 oz          | TC-GB1248-7A             | 1         |
| 14"            | 26" | 7 oz          | TC-GB1426-7A             | 1         |
| 16"            | 24" | 7 oz          | TC-GB1624-7A (Closed)    | 1         |
| 30"            | 30" | 7 oz          | TC-GB3030-7A (Open)      | 1         |

# Christy's Fabric Staples – 11 Gauge

The best way to secure fabric during installation. Galvanized steel. Flat top for easy installation.



## Staples

| Size         | Part No.     | Packaging | Box Qty. |
|--------------|--------------|-----------|----------|
| 6" x 1" x 6" | TC-WB-STPBLK | 1000/Box  | 1        |

# Installation Accessories



Visit TChristy.com to outfit your geotextiles installation crew with professional-grade tools and accessories including knee pads, gloves, fabric cutting tools, mallets and more.