

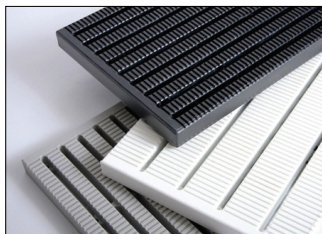
The Blue Line

The Foust Marketing, Inc. Newsletter

Inside this issue:

King StarBoard® AS—The Anti-Skid Marine-Grade Polymer Sheet	1
Pulsafeeder—Chem-Tech XP Peristaltic Timer Pump	1
IPS Weld-On®—New Roof Top Blox	1
Gallina—Policarb® Polcomp® Filters IR	2
Win Personalized Louisville Slugger!	2

King StarBoard® AS—The Anti-Skid Marine-Grade Polymer Sheet



King StarBoard® AS is a sure-grip, marine-grade, decking material designed specifically for high-traffic areas. This unique product features a special high-friction surface polymer in a diamond or dot pattern to prevent slipping and promote drainage. In addition to tradi-

tional marine and commercial swimming pool applications, King StarBoard® AS is ideal for many industrial, water and wastewater applications.

- Industrial Walkways
- Pool Bulkheads
- Industrial and Pool Grating
- Shower Floors
- Stairways and Entry Ways
- Step Treads
- Swim Platforms

Features and benefits include: chemical resistant, never needs

refinishing or painting, maintenance free, durable sure-grip material, and diamond or dot pattern that promotes drainage.

King StarBoard® AS has the standard King StarBoard® matte finish on the reverse side and the precise tolerances ensure consistent color, thickness and density. The material passes ASTM D2047 Slip-Resistant Testing.

For more information on King StarBoard® AS polymer sheet, visit www.kingplastic.com.

Industry Events

- South Texas Oilfield Expo
San Antonio, TX
July 27-28, 2016
- IWF—International Woodworking Fair, Atlanta, GA
August 24-27, 2016
- AWT—Association of Water Technologies, San Diego, CA
September 7-10, 2016
- WEFTEC—Water Environment Federation, New Orleans, LA
September 24-28, 2016

Notes of Interest

- “As iron sharpens iron, so one person sharpens another.” — **Proverbs 27:17**
- “The grass isn’t greener on the other side, it is greener where you water it” — **(Think about that in life and work)**

Company News

- **Foust Marketing** is excited to announce that we have filled both Technical Sales positions. Our new sales team will be reaching out to you soon to see where can help add value and earn your business.

Pulsafeeder—Chem-Tech XP Peristaltic Timer Pump

The Chem-Tech Series XP pump with peristaltic technology delivers worry-free dosing in a modern design. Each and every component of the Series XP is designed and manufactured for optimum reliability and durability for REAL performance.

The XP Timer model pump includes Digital 7 Day – 8 Event Electronic Timer that provides reliable pump control (4 GPD at 125 PSI to 80 GPD at 25 PSI).

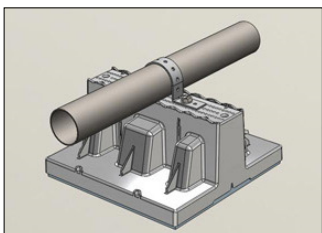
- **Fixed Rate Model**—Simple fixed rate pumps.
- **Adjustable Model**—20:1 Turn-down Control
- **Three Input Models**—Pulse Input, Flow Switch Activated, and Dry Contact Input.
- **Timer Model**—7 Day – 8 Event Electronic Timer

Tubing materials include standard Norprene tube material in Low Pressure ratings - extended tube life, High Pressure ratings



to meet demanding system requirements. Fluran tubing also available for chemical resistance. For more information, visit www.pulsatron.com.

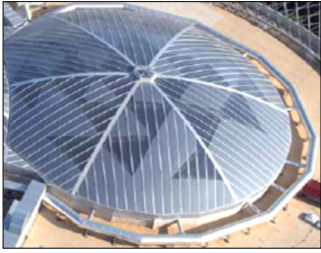
IPS Weld-On®—New Roof Top Blox



Roof Top Blox are the perfect solution for supporting piping and equipment on flat commercial roofs. Engineered with contractors in mind, the Roof Top Blox system is designed to be quickly installed, expanded, and adjusted from just the top side!

Their revolutionary roof top support block system works with height extension rods, pipe support brackets, pipe roller brackets, strut support brackets, and more. Versatile enough for every roof plumbing support, roof piping support, and roof platform support need, even our packaging makes transporting roof support blocks to the job — and roof top — a faster and more efficient process. Easier installation and lasting dependability make us the best roof block choice to specify or install for supporting pipes and mechanical equipment on flat commercial roofs.

Gallina—Policarb® Policomp® Filters IR



Recently opened in Sicily, the region's largest mall, is characterized by more than 12,000 m² of translucent covering. The application of the skylights of huge size would have allowed for tremendous internal heat build-up resulting in extraordinary air conditioning costs. The use of the Gallina's wide polycarbonate sheets with the exclusive IR filters has helped solve the problem of internal overheating. The Polycarbonate IR sheets constitute covering of all common areas of the center permitting the passage of natural light and maintaining at the same time a comfortable internal atmosphere.

Gallina's IR products absorb the part of the light relative to the infrared rays, blocking effectively the solar heat, while letting the solar light through. The result is a reduction of the internal transmission of heat and a reduction of cost for cooling the area. In fact all the products from Gallina's IR line can contribute to reduce the temperature increase up to 25% while increasing the light transmission by up to 60% with respect to other window products.

For more information, on Gallina's line of IR products, visit www.gallinausa.com.

Win Personalized Louisville Slugger!

This time of year, we always get in the spirit of the baseball season by offering *personalized* Louisville Slugger baseball bats to the top (3) entries courtesy of **NIBCO (Chemtrol)**. With their name on the bat, it is an ideal gift for the baseball fan or child.



1. List a couple applications for King StarBoard AS Anti-Skid Polymer Sheet?
2. What turn down control does the adjustable Chem-Tech Series XP Timer pump offer?
3. What is IPS Weld-On Roof Top Blox the perfect solution for?
4. What does Gallina's IR line contribute to for temperature increase/light transmission?
5. Is the grass always greener on the other side? Where is it really greener?

Winners of the Titleist Pro V1x golf balls from the last issue courtesy of **Foust Marketing**.

Lynn Sunderland, Manager
Regal Plastics—Shreveport, LA

Ryan Shinabery, Sales
Curbell Plastics—Arlington, TX

Jaime Lozano, Sales
Harrington Plastics—Houston, TX

Doug Hopton-Jones, Sales
Nationwide Plastics—Arlington, TX

Complete the entry form at www.foustmarketing.com/entry-form.



foustmarketing, inc.

Engineered solutions for your business

Main Office

Foust Marketing, Inc.
P.O. Box 7413
The Woodlands, TX 77387-7413
Tel: 281-296-2500
Fax: 281-296-2566
Bryan Foust, CPMR, CSP
bryan@foustmarketing.com

Harley Poe, Technical Sales
harley@foustmarketing.com

Pulsafeeder



NIBCO



King



Harrison



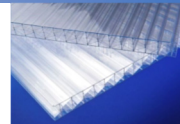
IPS



SCIGRIP



Gallina



Rain Bird

