

PULSAFEEDER®

The Flange Mount Mixer provides a convenient and economical means of mounting smaller mixers. The flange mount allows the mixer to be mounted directly to the tank cover or other flat surface eliminating the need for an additional mixer support. Flange mount mixers are available with 1/3 HP, 115V, open and 1/20 HP, 115V or 230V, TEAO motors. The 1/20 HP flange mount mixer may be mounted directly onto Pulsafeeder solution tanks featuring rigid covers (35 gal - #40365 and 55 gal - #J40366). All mounts are of a one or two piece construction and are held securely to the tank surface by three to four 18/8 stainless steel fasteners which provide ample strength to withstand operational stresses.

Construction

All mixers feature a 316 stainless steel shaft with an integral impeller. Special epoxy and vinyl shaft coatings are available for applications where the solution being agitated is not compatible with 316 stainless steel. The shaft is coupled to the motor via a brass adapter which is held securely by four stainless steel set screws.

All mounting fasteners are 18/8 stainless steel. The mounting flanges may be of stainless steel or steel with a corrosion resistant coating depending on mixer size and configuration.

Installation

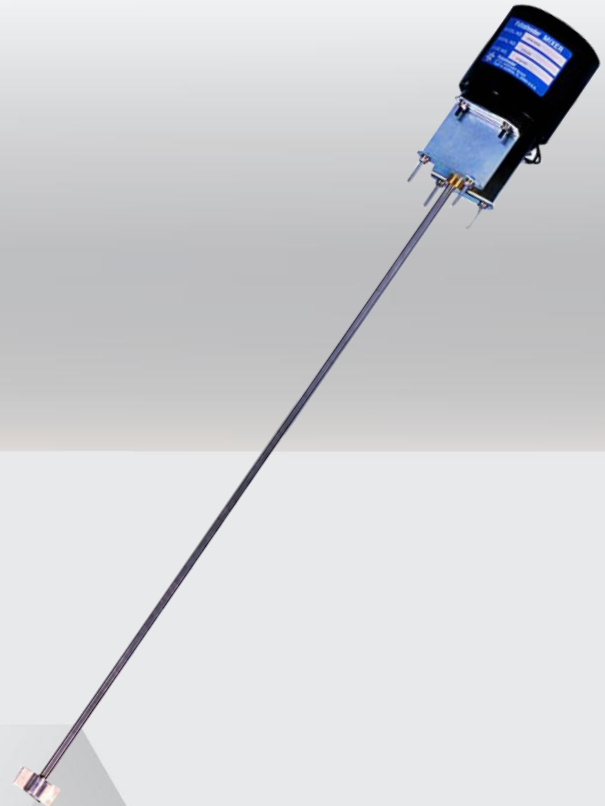
Select the proper location on the tank cover. Ensure this location allows proper support of the mixer without allowing the impeller to contact the tank (maintain at least a 3" clearance between the impeller and side wall of tank or any tank bulkhead). Cut or drill the mounting holes and the shaft hole according to the mounting dimensions provided. Place mixer assembly on top of tank and align the holes. Fasten with bolts provided.

Features

- 316 SS Shaft
- Epoxy and Vinyl Shaft Coatings Are Available
- Shafts Cut to Length

Operating Benefits

- Flange mount eliminates the need for additional mixer support.



Aftermarket

- Double Wall Containment Tanks from 15 to 500 gallons.
- 1, 2, or 4 Drum Spill Containment Pallets.
- Metering Pumps.



Flange Mount Mixer

Flange Mount Mixer

Specifications and Model Selection

Flange Mount Mixer Selection Guide	
MOUNT:	F = Flange Mount Mixer
HORSEPOWER:	M = 1/20 2 = 1/3
TYPE:	0 = Open Drip Proof - 1/3 HP only Position 3 thru 4 as needed TE = Totally Enclosed Air Open - 1/20 HP only
SHAFT:	H = 316 Stainless Steel
AVAILABLE OPTIONS:	WRD = 6' 3 wire 18 gauge SJ cord and plug installed at factory EPOXY = Special epoxy corrosion resistant coating for stainless steel impeller and shaft VINYL = Special vinyl corrosion resistant coating for stainless steel impeller and shaft recommended for sodium hypochlorite 230 = 230V Motor Length = Length in inches represents shaft length requested
	Suction Tube Shield Assembly. 1" PVC tube, prevents pump suction tubing from entangling with mixer blade.
	28655 = 29" - 55 gallon 28656 = 20" - 35 gallon
A completed model number should look like 'F-M-TE-H/VINYL 36"'	

Engineering Data

1/20 Horsepower

RPM:	1500
Type:	Totally Enclosed
Voltage:	115 V/ 23V
Amperage:	1.9 / 0.75
Motor Design:	Split Phase Ball Bearing Non Ventilated

Shaft Length:*
Impeller Diameter:

28" x 5/16"
1 1/4"

1/3 Horsepower

RPM:	1725
Type:	Open Drip proof
Voltage:	115 V only
Amperage:	5.9
Motor Design:	Split Phase Sleeve Bearings

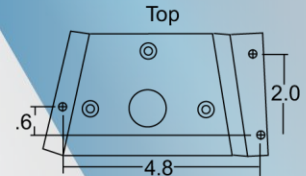
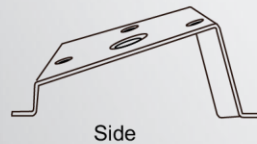
Shaft Length:*
Impeller Diameter:

34" x 1/2"
2 1/2"

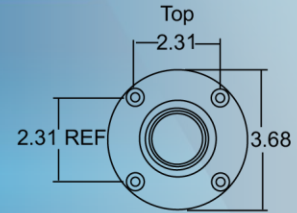
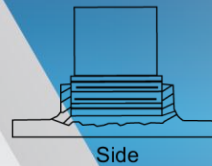
* Shafts may be cut to length upon request

Alternate Mounts

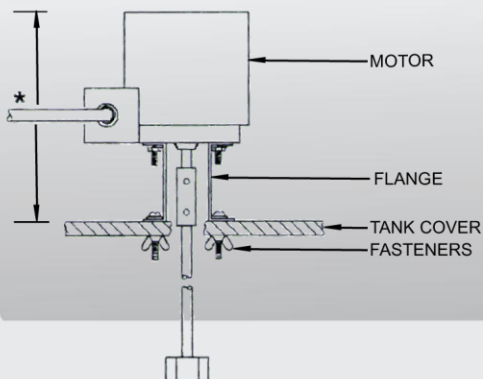
1/20 HP, 230V, 50 Hz Models:



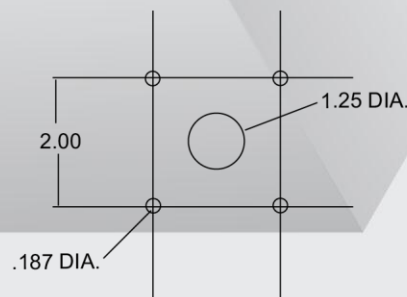
1/3 HP Models:



Mount Detail



Mounting Dimensions:



* HEIGHT VARIES WITH MIXER CONFIGURATIONS
MAXIMUM HEIGHT IS 12"

PULSAFEEDER

27101 Airport Road
Punta Gorda, FL 33982
Phone: ++1(941) 575-3800
Fax: ++1(941) 575-4085

www.pulsatron.com



An ISO 9001 Certified Company

FMM001 I14

IPEX
FLUID & METERING