

Inside this issue:	
Walraven–BIS Pacifyre® MK II Fire Sleeve	1
CO-EX–Modulit Product Used in Artist Design Center	1
King StarLite® XL–The Ultimate Building Material	1
Harrison Duct–Exhaust and Fume Systems	2
The Blue Line–Enter to Win NCAA T-Shirt!	2

Walraven–BIS Pacifyre® MK II Fire Sleeve



The BIS Pacifyre® MK II Fire Sleeve is a single component fire sleeve with which you can make an aperture for pipes smoke free and fire resistant. In homes, factories, hospitals, offices and other commercial buildings the BIS Pacifyre® MK II is installed around pipes

through floors, ceilings, solid walls and modular walls.

BIS Pacifyre® MK II Fire Sleeves ensure fire compartments that effortlessly comply with the building regulations.

- Prevents the spreading of fire.
- Prevents the spreading of smoke.
- Prevents the conduction of noise.
- Remains operational for decades without maintenance.
- Expansion and contraction of the pipe remains possible.
- Contains no dangerous materials

- Emits no toxic gases or smoke in the event of a fire

In accordance with the building regulations for fire protection every building must be divided into fire compartments. Unprotected apertures for mechanical installations, compromise the fire resistance of the walls, floors and ceilings of such a fire compartment.

Therefore, the Walraven BIS Pacifyre® MK II properly seals these apertures to code. Click on the [BIS Pacifyre MK II](#) brochure for more information.

Industry Events

- Valve World Americas Expo
Houston, TX
June 25-26, 2013
- IAPD (International Association of Plastics Distribution)
Miami Beach, FL
September 30-October 2, 2013
- AWT Convention (Association of Water Technologies)
Uncasville, CT
October 30-November 2, 2013

Notes of Interest

- “The grass withers and the flowers fall, but the word of our God stands forever.” - **Isaiah 40:8**
- “A wise man once said that we may not always get what we want, but we always get what we need.” - **Duck Dynasty**

Company News

- **Foust Marketing** has continued our series of product and application webinars. Please contact our team to register for the next webinar featuring the [Walraven Pacifyre® MK II Fire Sleeve](#).

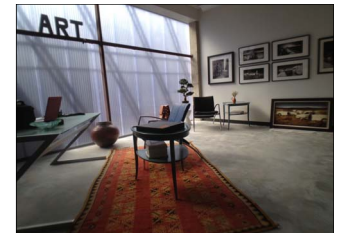
CO-EX–Modulit Product Used in Artist Design Center

CO-EX polycarbonate wall systems are ideal for use in vertical glazing for both interior and exterior use. When combined with colorful lighting effects, interior walls can become translucent panels that can change the mood of the room with a flick of a switch.

An ideal clerestory material, their modular wall system is perfect for areas requiring natural daylight without harsh shad-

ows. And, with all of CO-EX products, their polycarbonate is co-extruded with UV protection to insure your interior colors resist fading.

Foust Marketing and CO-EX recently completed a project in the Austin area where an Artist Design Center (*pictured right*) utilized the Modulit product for the exterior walls. We worked with the architects to help with specifications and create a



designed look that allowed light to enter the room while protecting the art from harmful UV rays. Visit www.co-excorp.com for more information.

King StarLite® XL–The Ultimate Building Material



King StarLite® XL is an economical cellular (closed cell) utility sheet made from select high-grade King StarBoard® recycled polymer material. It is ideal for boat parts, upholstery substrates, cabinet drawers, and other applications where edges aren't visible. King StarLite® XL is up to 35% lighter in weight than King StarBoard® and it offers the same quality textured matte surface on both sides. Key Features include: Cost Effective; Environmentally stabilized to withstand tough environments; Will not rot, swell or delaminate when exposed to humidity; Resists odors, even in wet environments; Able to securely hold staples and screws; Custom sizes available; The perfect lightweight replacement for plywoods or MDF; Flexes without breaking, unlike plywood or PVC foam products; Easy to clean and never needs refinishing; Easy to fabricate using standard woodworking tools. King StarLite XL is available in Utility Black, Utility White and Utility Gray. For more information, visit www.kingplastic.com.

Harrison Duct—Exhaust and Fume Systems



Harrison Machine and Plastic duct systems are fabricated to your specifications. Harrison duct and piping is offered from 2" to 60".

Complete duct piping systems for air and pollution control are manufactured in PVC, CPVC, PP, HDPE materials, and available in round and rectangular duct for corrosion resistant air handling systems.

Fittings are made to customer or SMACNA specifications. Harrison is a Certified Corzan®

CPVC Qualified Fabricator.

- **Cost-Effective:** Harrison duct pipe is cost-effective for industrial corrosive fume, exhaust and drain applications.
- **Easy Installation:** Harrison duct is light weight, making it easy to handle and install.
- **Corrosion Resistant:** Harrison duct pipe has excellent chemical resistance to many fumes, gases, and fluids. It stands tough against most acids, bases, salts, aliphatic solutions, oxidants, and halogens.
- **Diameters up to 60":** Harrison pipe is extruded in sizes thru 24" and fabricated (rolled) in sizes thru 60".

For more information on Harrison pressure and duct fitting dimensions and specifications, visit www.harrisonplastic.com.

The Blue Line—Enter to Win NCAA T-Shirt!

Foust Marketing is offering the opportunity to win a prize in this issue of *The Blue Line*.

This issue we are offering a **NCAA T-Shirt** of your favorite team to the top two entries (*Not necessarily UT but that would improve your chances*). Prize is courtesy of **Walraven**.



Enter by visiting our website with the correct answers.

1. List a couple features of the NEW Walraven BIS Pacifyre® MK II Fire Sleeve?
2. What did the design of the Modulit product at the Artist Design Center project allow?
3. What are a couple features of the King StarLite® XL utility grade HDPE product?

4. What are the applications for Harrison duct pipe and fittings?
5. According to Duck Dynasty, what do you always get?

We appreciate all our friends and business partners that connected with us on **LinkedIn**, **Twitter**, and **Facebook** from the last issue. If you have not yet connected with us, please click on the links at the bottom of this page.

Complete the entry form at www.foustmarketing.com/entryform.htm.



foustmarketing, inc.

Engineered solutions for your business

Main Office

Foust Marketing, Inc.
 P.O. Box 7413
 The Woodlands, TX 77387-7413
 Tel: 281-296-2500
 Fax: 281-296-2566
 Bryan Foust, CPMR, CSP
bryan@foustmarketing.com

Kathleen Ackerly
kathleen@foustmarketing.com



Pulsafeeder



NIBCO



King



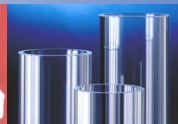
IPS



Harrison



TPI



CO-EX



Max-Air

